

GHIBLI



AYRTON
Digital Lighting

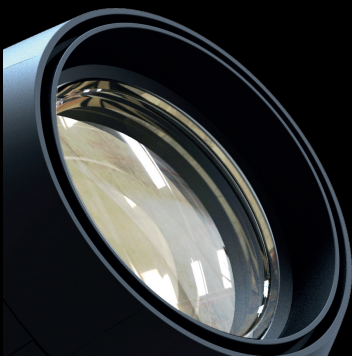
GHIBLI AUTOMATED LUMINAIRES

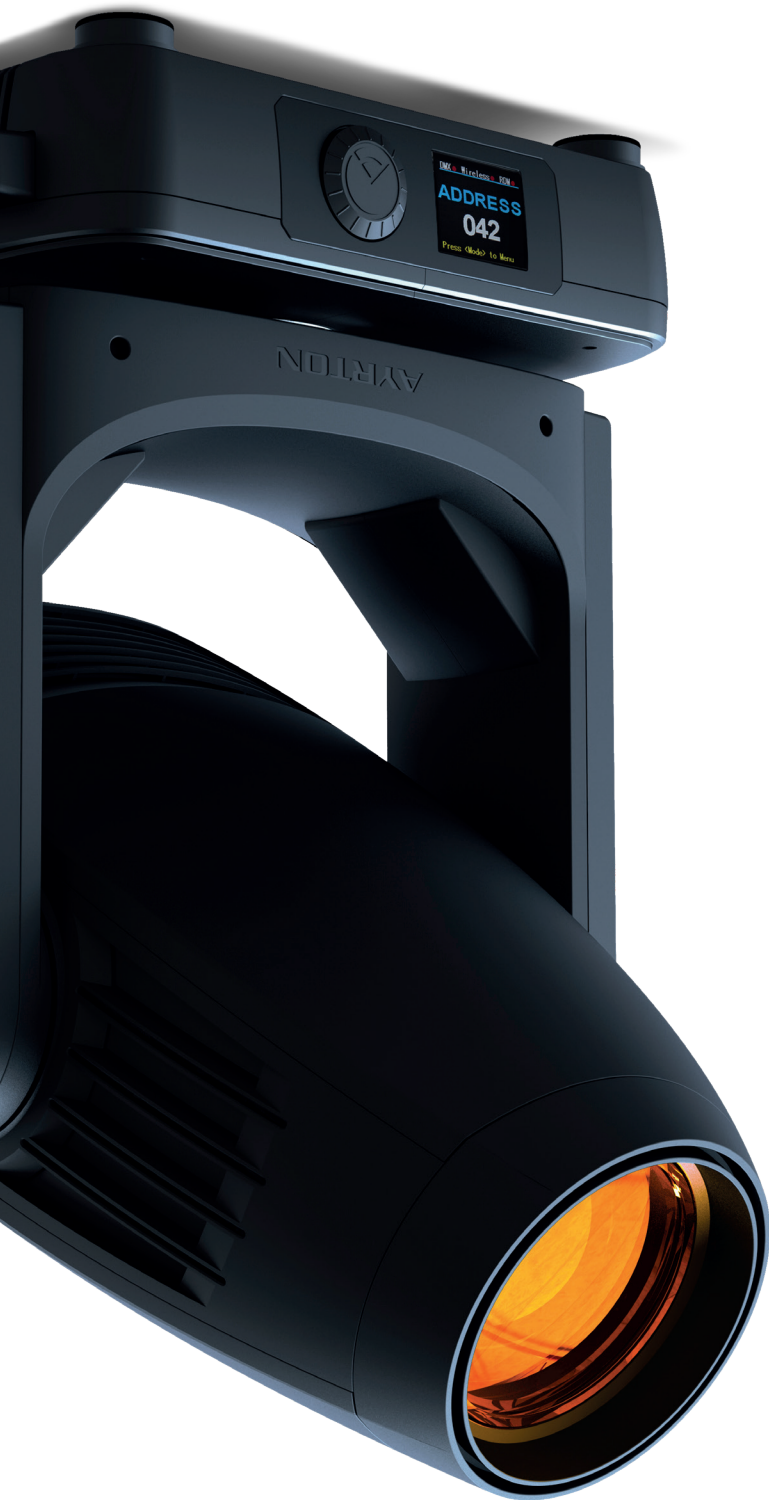
GHIBLI™ is Ayrton's first LED spot luminaire that is factory-equipped with a framing system designed to offer lighting designers unlimited creative possibilities without any compromise. Fitted with an LED module using a high-output, low-etendue monochromatic white light source calibrated at 7,500K, GHIBLI™ delivers a light output of 23,000 lumens in a highly compact format.

The proprietary optical system, equipped with a 137 mm frontal lens, has 13 high-quality lenses, delivering an 8:1 zoom ratio and a zoom range of 7° to 56°. The optics produce an extremely uniform fat beam with no hot spot. The selection of gobos and colours was made in collaboration with lighting designers to meet the needs of the entertainment industry.



Standard features of GHIBLI™ include a CMY colour mixing system combined with a variable CTO and a six-position complementary colour wheel to produce in an infinite palette of pastels and saturated colours. The luminaire is fitted with an entirely new filter for optimising the colour rendering index. The framing system allows each frame to be positioned with precision on a 100% surface area in all positions. The effects section includes two wheels with interchangeable HD glass gobos: one with seven rotating and the other with eight fixed gobos; a continuous dynamic effects wheel; an iris diaphragm; two frost filters and a four-facet rotating prism. For optimum stability, GHIBLI™ is equipped with a new, highly effective phase-change liquid cooling system using a heat pipe.





OPTICS

- 13 elements 8:1 zoom high resolution optic system
- Beam aperture: 7° to 56°
- Fast motorised linear zoom
- Tempered anti-reflective coated lenses
- 137 mm front lens for ultimate performance

LIGHT SOURCE

- 30K low-etendue White Light Engine
- Total luminaire output: up to 23,000 lumens
- CRI: up to 90 with High CRI filter
- Rated source life: up to 25,000 hours
- Flicker-free source management, suitable for TV applications and all video recorded events

MOVEMENT

- Extremely accurate positioning
- Moving head operated via either 8 or 16 bit resolution
- High-resolution stepper motors operated via microprocessors ensure extreme accuracy and smooth movements
- PAN and TILT automatic repositioning
- Moving head range: 540° (PAN), 280° (TILT)

COLOURS

- Sophisticated colour mix system providing CMY colour mixing
- Variable CTO colour temperature correction
- Fixed colour wheel with High CRI filter and six saturated colour filters

GOBOS

- Indexable rotating gobo wheel with 7 high precision glass gobos plus open position
- Adjustable speed rotating gobo in both directions
- Fixed gobo wheel with 8 high precision glass gobos plus open position
- Gobo Ø: 30.0 mm - Image Ø: 22.0 mm

FRAMING SYSTEM

- 4 individually positionable shutter blades
- Rotation of the framing system module: +/- 60°

IRIS DIAPHRAGM

- Fast iris diaphragm with adjustable dynamic effects
- Iris range : 15% to 100% open

EFFECTS

- Graphic animation effect wheel with continuous rotation in both directions
- 5-facet rotating and indexable prism
- 2 frost filters: soft edge & hard edge

DIMMER / STROBE

- Electronic dimmer, allowing perfect light adjustment from 0 to 100% without colour variation
- White or colour strobe effect, with speed adjustment from 1 to 25 flashes per second

SOFTWARE FACILITIES

- Local DMX addressing of the luminaire and its optional parameters through its built-in LCD panel control
- Remote DMX addressing of the luminaire and its optional parameters through a standard RDM DMX controller
- Information menu including hour counter, temperature, software version

HARDWARE FACILITIES

- Graphic LCD Display for setting address and special functions, with flip function
- Clicking jog wheel to set functions
- Over-heating protection
- XLR 5-pin male/female connectors for DMX connections
- Ethercon RJ45 IN / OUT connectors for ArtNet connections

CONTROL

- DMX 512 protocol, through DMX cable or wireless system
- Stand-alone mode and Master/Slave modes
- DMX-RDM compatible
- Integrated DMX-RDM wireless receiver from LumenRadio™
- Local control panel, with LCD display
- DMX 512 Input / Output through XLR5 connectors
- ArtNet protocol through RJ45 connectors
- Choice of 3 DMX modes (from 34 to 58 DMX channels)

POWER SUPPLY

- Electronic supply with active PFC
- 110 to 240 Volts - 50/60Hz
- Power 900 W max

COOLING SYSTEM

- Advanced cooling system based on heatpipe technology
- Self adjusting variable speed fans for quiet operation
- Selectable ventilation user modes
- Safety protection against over-heating

HOUSING

- Moving head skeleton made of aluminium
- Heatsinks in aluminium and copper with satin finish
- Moulded covers in self-extinguishing, fire retardant ABS PC (V0 class)
- Two side handles for transportation
- IP20 protection rating
- Exterior finish: black (Carbon)

INSTALLATION

- Fastening bracket system: two Omega ¼ turn brackets designed for use with standard clamps
- Mounting points: eight ¼ turn locking fittings allowing three different installation of Omega brackets on luminaire
- Safety cable attachment point

OPERATING PARAMETERS

- Operating positions: all
- Maximum permitted ambient temperature authorised (Ta max): 45°C (113°F)
- Minimum permitted ambient temperature authorised (Ta min): -10°C (14°F)
- Minimum usage distance: 2.0 m (79 inches)

COMPLIANCE

- EMC Directive 2014/30/EU
- LVD Directive 2014/35/EU

SIZE

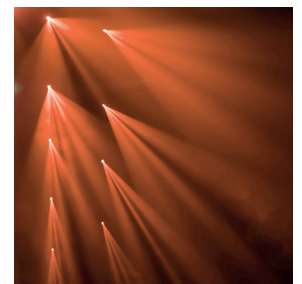
- Product: 494 x 729 x 281 mm (l x h x d)
- Flight-case Foam : 545 x 765 x 360 mm (l x h x d)

WEIGHT

- Product: 35.6 KG

PRODUCT CODES

- 011450 : GHIBLI AUTOMATED LUMINAIRE





www.ayrton.eu